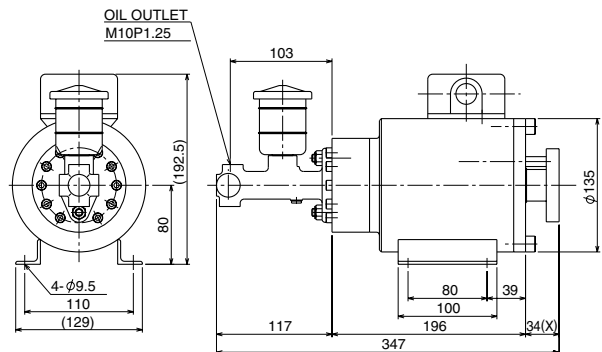
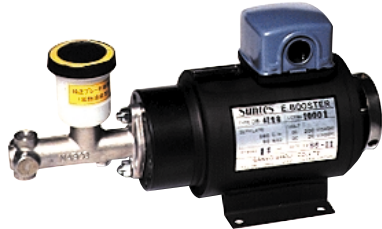
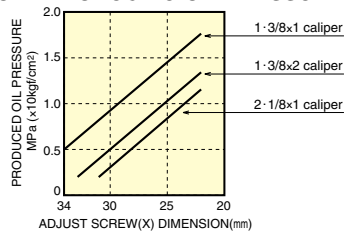


DB-4133EF



● STROKE PRODUCING OIL PRESSURE LIST

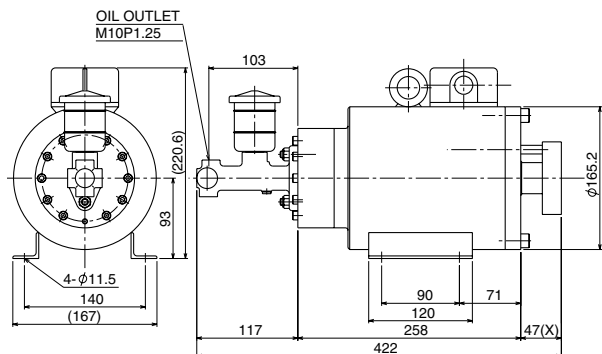


● SPECIFICATION

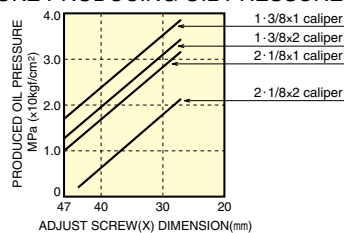
MODEL TYPE	DB-4133EF
DISCHARGE OIL VOLUME (cc)	3
DASH SUPPLY VOLTAGE (V)	DC150-210
KEEP SUPPLY VOLTAGE (V)	DC20-31
POWER CONSUMPTION (W)	17 (CONDUCTION CONTINUOUSLY AT DC31V)
DUTY RATE	360 C/H · 50%ED OR CONTINUOUSLY KEEPING DUTY RATE
SUITABLE POWER SUPPLY BOX	AP-2403 *
WEIGHT (kg)	15.5

Oil to be used: Use Brake Oil (Vegetable).
*For detail refer page 32.

DB-4143EF



● STROKE PRODUCING OIL PRESSURE LIST



● SPECIFICATION

MODEL TYPE	DB-4143EF
DISCHARGE OIL VOLUME (cc)	5
DASH SUPPLY VOLTAGE (V)	DC150-210
KEEP SUPPLY VOLTAGE (V)	DC20-31
POWER CONSUMPTION (W)	22 (CONDUCTION CONTINUOUSLY AT DC31V)
DUTY RATE	360 C/H · 50%ED OR CONTINUOUSLY KEEPING DUTY RATE
SUITABLE POWER SUPPLY BOX	AP-2403 *
WEIGHT (kg)	33

Oil to be used: Use Brake Oil (Vegetable).
*For detail refer page 32.

*Dimensions and specifications might be changed for improvement without notice.